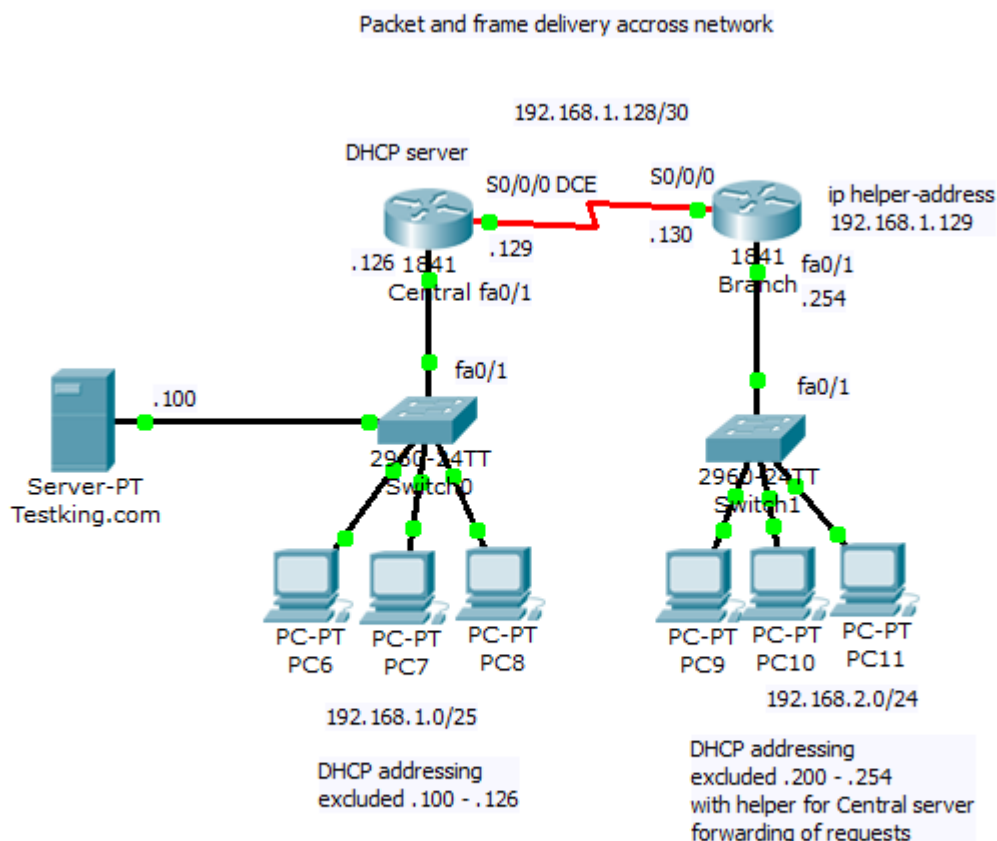


2. Packet and frame delivery

When data segment is encapsulated into packet appropriate PC must examine destination address when preparing frame creation. If destination IP is on same network as sending PC data are sent to appropriate host. Else data are sent to network interface that act as a default gateway.

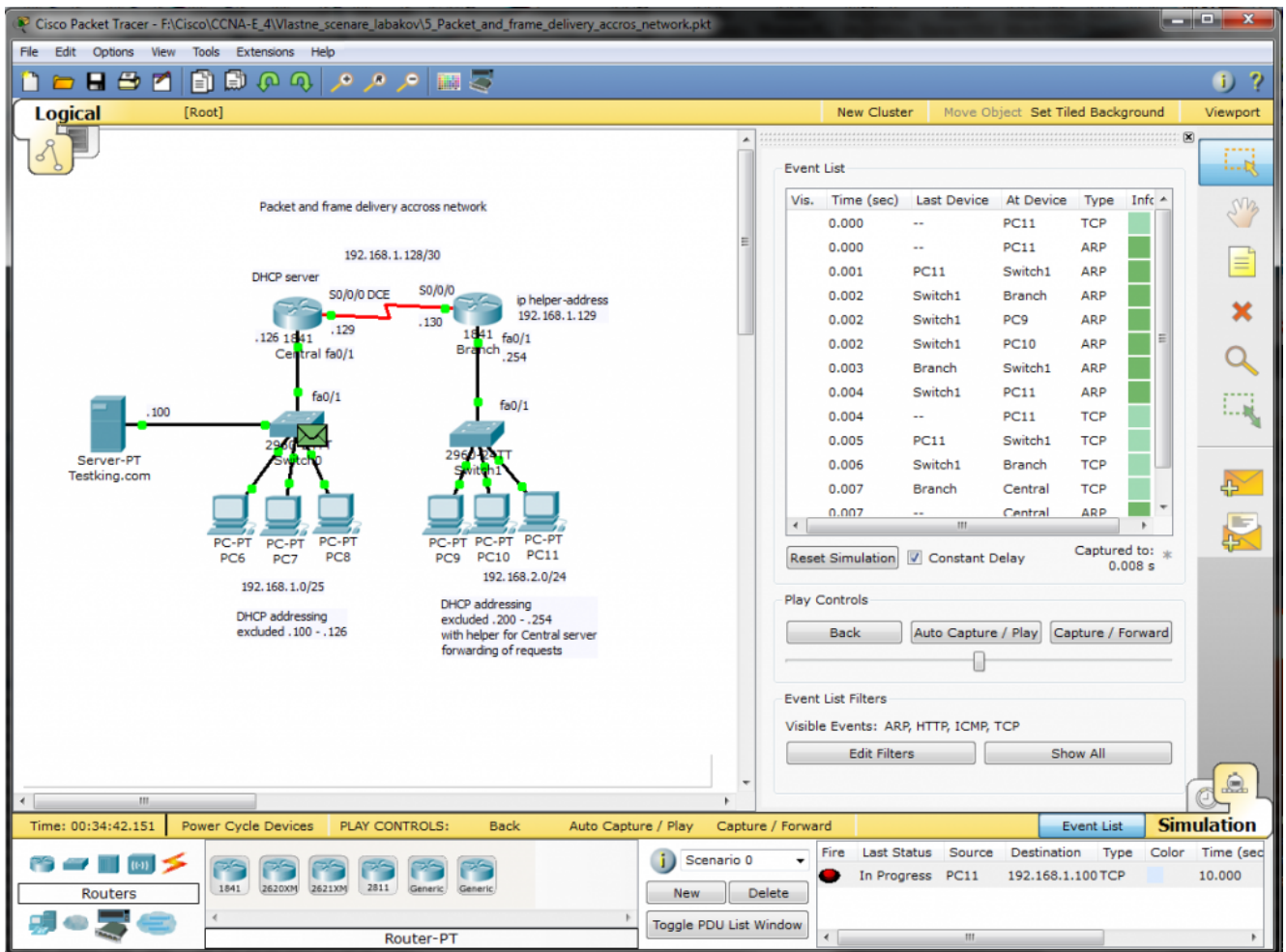
This process use and-ing destination IP in binary format with binary format of network mask and next make comparison with configured network address. If they are unequal data are send to default gateway (MAC address of default gateway is set as destination address of frame). In this scenario you are encouraged to create PDU in simulation mode and examine packet delivery. Interesting are also PDU at appropriate protocol stack (Transport, network and data link layer).

Topology of our scenario is



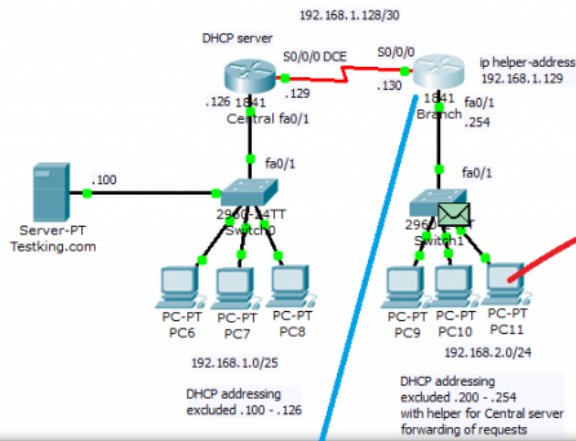
Preconfigured scenario (PKT 5.2 or above).

When you toggle betw. realtime and simulation mode, interface will change to next picture



After appropriate time used for PDU propagation across network (and ARP caching for L2 encapsulation), PC11 can send frame to Branch fa0/1 interface that act as a default gateway. You can scroll event list and look at PDU emitted by PC11 after ARP process as it show next picture.

Packet and frame delivery across network



PDU Information at Device: Switch1

OSI Model Inbound PDU Details Outbound PDU Details

PDU Formats

Ethernet II

PREAMBLE: 10101011

DEST MAC: 000A.F329.7902

SRC MAC: 0030.F2EC.AA48

TYPE: 0x800

DATA (VARIABLE LENGTH)

FCS: 0x0

IP

ID: 0x4

DSCP: 0x0

TL: 44

TTL: 128

PRO: 0x6

CHKSUM

SRC IP: 192.168.2.1

DST IP: 192.168.1.100

OPT: 0x0

DATA (VARIABLE LENGTH)

PORT: 6542

DEST PORT: 80

Branch

Physical Config CLI

IOS Command Line Interface

```
Branch#show interface fa0/1
FastEthernet0/1 is up, line protocol is up (connected)
Hardware is Lance, address is 000a.f329.7902 (bia 000a.f329.7902)
Internet address is 192.168.2.254/24
MTU 1500 bytes, BW 100000 Kbit, DLY 100 usec,
    reliability 255/255, txload 1/255, rxload 1/255
Encapsulation ARPA, loopback not set
ARP type: ARPA, ARP Timeout 04:00:00,
Last input 00:00:08, output 00:00:08, output hang never
Last clearing of "show interface" counters never
Input queue: 0/75/0 (size/max/drops); Total output drops: 0
Queueing strategy: fifo
Output queue :0/40 (size/max)
5 minute input rate 1 bits/sec, 0 packets/sec
5 minute output rate 0 bits/sec, 0 packets/sec
    7 packets input, 416 bytes, 0 no buffer
    Received 6 broadcasts, 0 runts, 0 giants, 0 throttles
    0 input errors, 0 CRC, 0 frame, 0 overrun, 0 ignored, 0 abort
    0 input packets with dribble condition detected
    5 packets output, 310 bytes, 0 underruns
    0 output errors, 0 collisions, 1 interface resets
    0 babbles, 0 late collision, 0 deferred
    0 lost carrier, 0 no carrier
--More--
```

max of default gateway

Copy Paste

Simulation

Event List

Fire	Last Status	Source	Destination	Type	Color	Time (sec)
In Progress		PC11	192.168.1.100	TCP		10.000

3 reads

Send to friend

Alt+F4 Exit