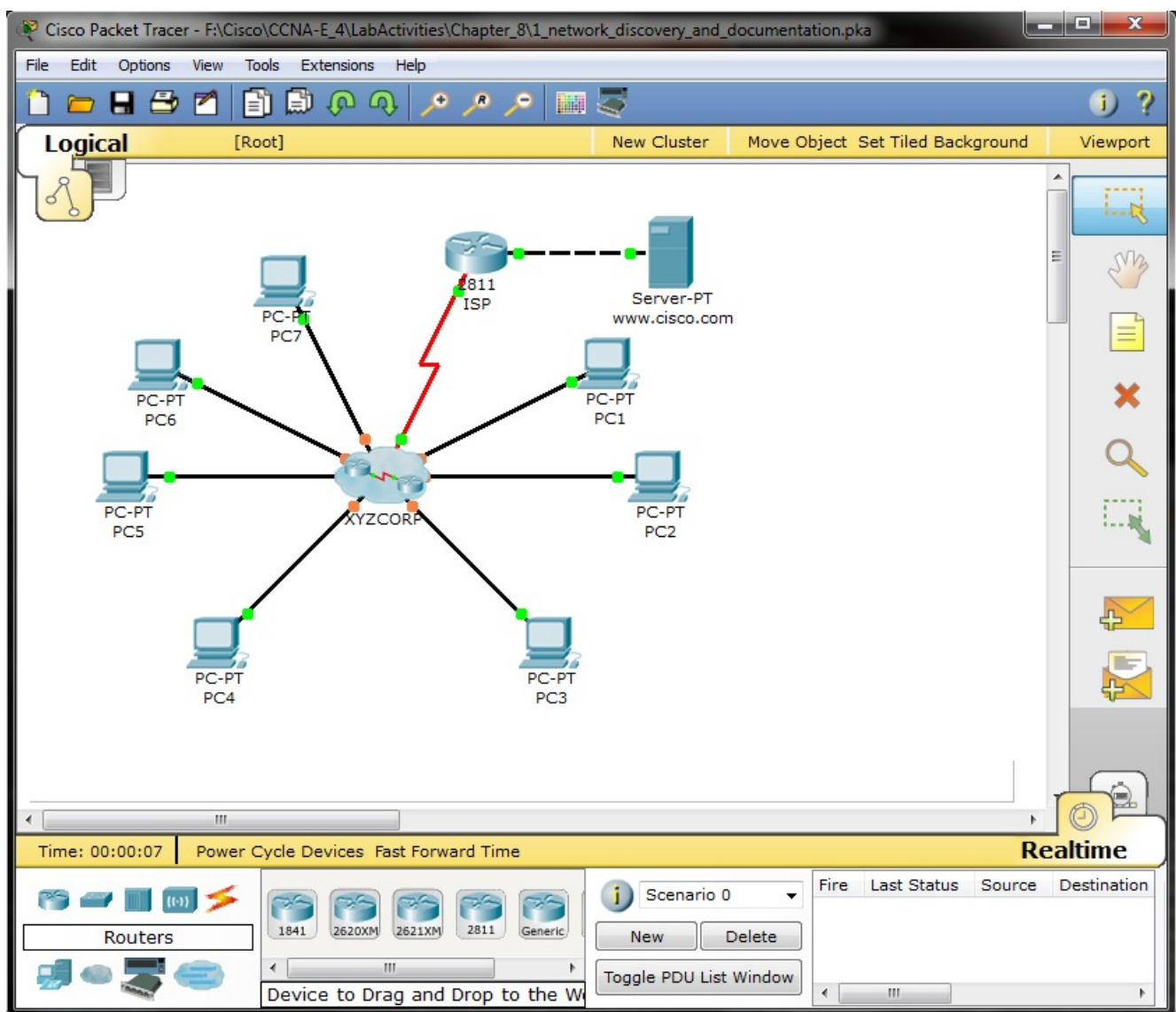


5. Reconstruction discovered network topology along Activity 8.1.2 (CCNA Exploration)

During me preparation for CCNA examen there was some challenges. One from it was discovering hidden network topology in CCNA Exploration course 4. chapter 8. Network troubleshooting with name Activity 8.1.2.

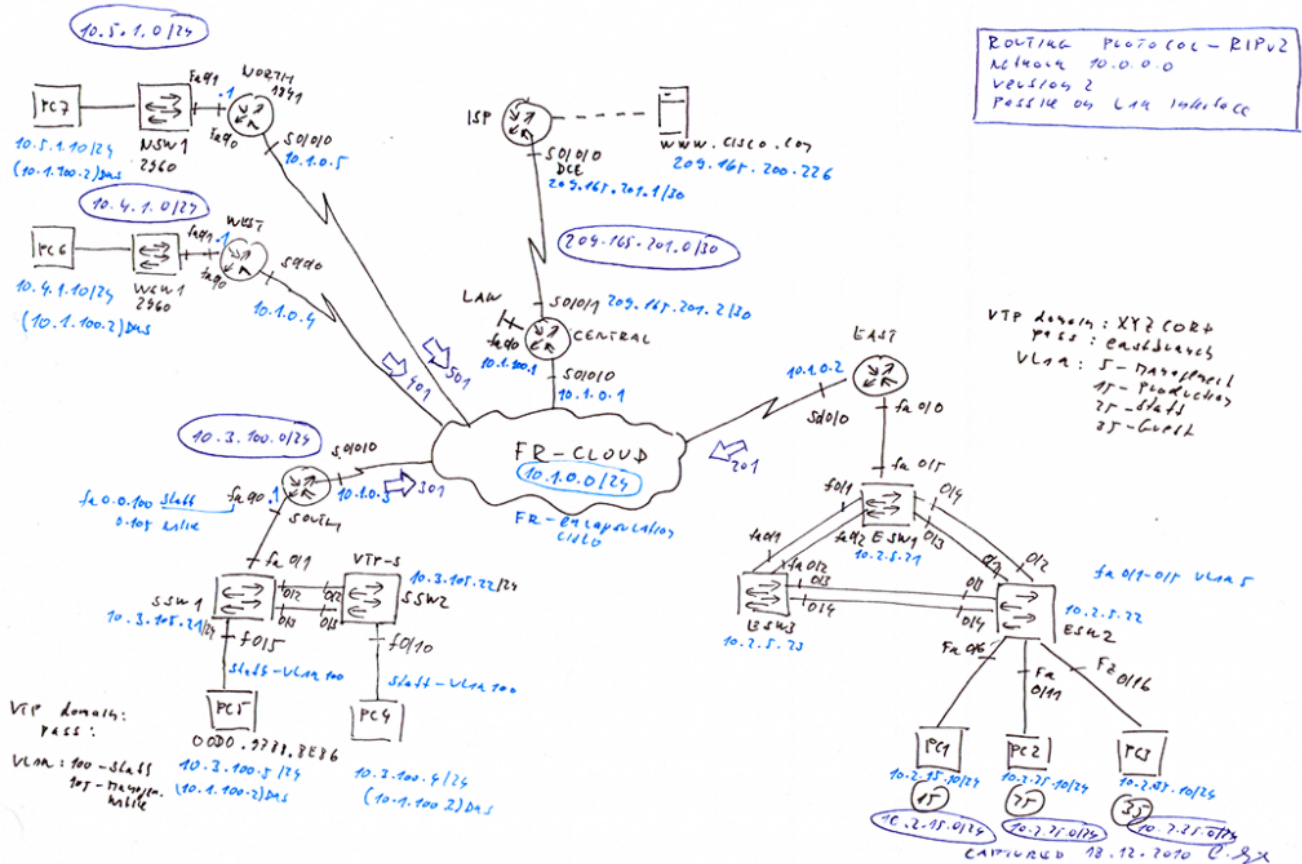


First big deal is make telnet sessions to devices obtained from local pc configuration (IPs of appropriate default

gateways). Next you must show cdp neighbors or cdp neighbors detail and access L2 discovered neighbor switches for examination of VTP status, STP root bridge election and port states in stable state (converged network).

If you go around mentioned process you will obtain this topology diagram:

CCNA-E COURSE 4, CHAPTER 8
Lab 1 Network discovery and documentation



Or if you will in some compact form it look like this



Reconstructed scenario along me discovery can be obtain from here (PKT 5.2 or above).

